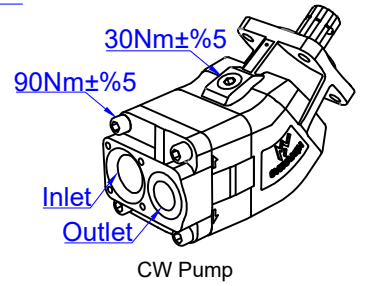
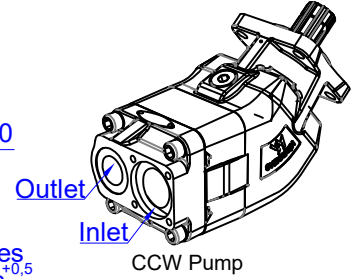
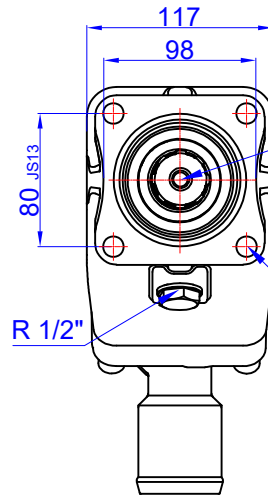
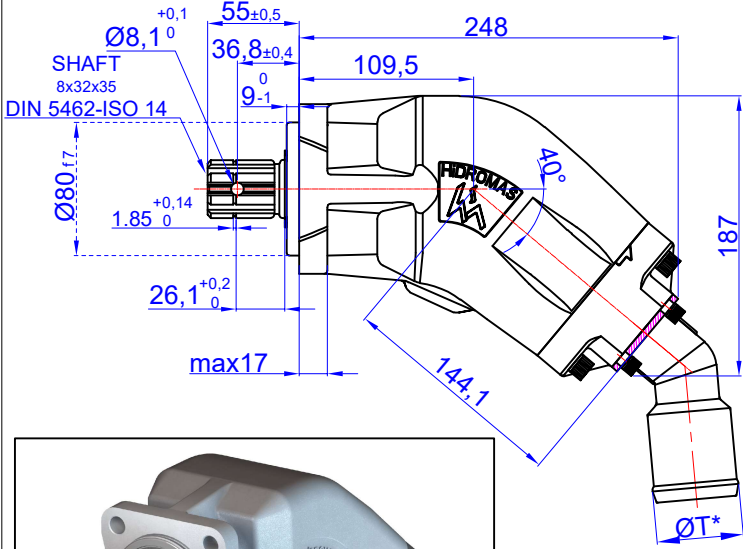


115L BENT AXIS PISTON PUMPS
7 ELEMANLI EKSENEL POMPA 115L SAĞ / SOL

Product Code / Ürün Kodu : PEX752115131
Ref. No: TP-0001 PEX752115132

CW
CCW



ØT*: Emiş ve basınç rakoru ayrı sipariş verilmelidir.
Suction and pres. adapter must be ordered separately.

Inlet	Outlet
ØT*	1" BSPIT

TEKNİK BİLGİLER / TECHNICAL DATA

Specifications

Displacement	115	cm ³ /rev
Max. Peak Pressure (P1)	300	bar
Max. Intermittent Pressure (P2)	270	bar
Max. Continuous Pressure (P3)	250	bar
Max. Speed at Intermittent Press.	2000	min ⁻¹
Min. Speed at Intermittent Press.	300	min ⁻¹
Max. Speed at Continuous Press.	1500	min ⁻¹
Oil Temperature Range	-40 ~ 80	°C
Inlet Pressure Range (suction side)	0,85 ~ 2	bar
Recommended Oil Viscosity Range	12 ~ 100	mm ² /s (cSt)
Max. Starting Viscosity	750	mm ² /s (cSt)
Filtration :		
Working Pressure < 200 bar	25	µm
Working Pressure > 200 bar	10	µm
Connection :		
Min. Suction Hose Bore Diameter (ØT)	2	inch
Weight	13,5	kg
Rust prevent oil applied shaft area	protect 12 moths	

Power and Torque

Pressure (Bar)	50	100	200	300
Torque (Nm)	102	203	407	610

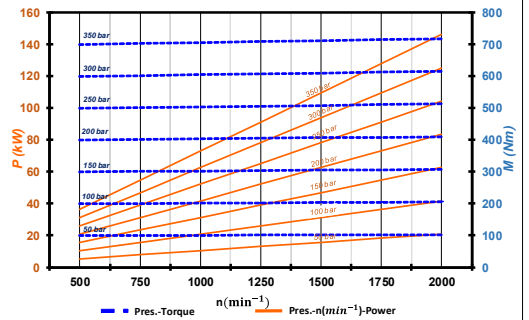
Power (kW)

rpm / Bar	50	100	200	300
500	5	11	22	33
1000	11	22	44	65
1500	16	33	65	98
2000	22	44	87	131

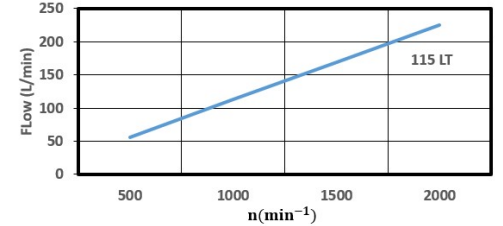
rpm (rev/min)	Flow (L/min)
500	56
1000	113
1500	169
2000	225

DİYAGRAMLAR / DIAGRAMS

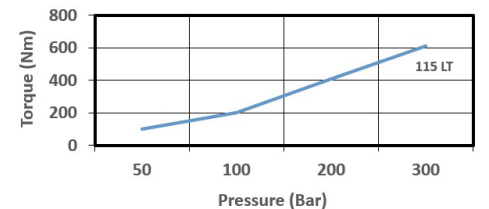
Power-Pressure Graphic



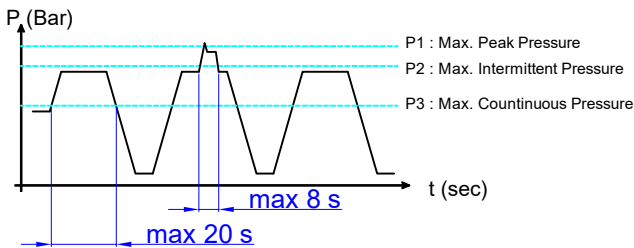
Flow-rpm Graphic



Torque-Pressure Graphic



Pressure Definition



Hydraulic Pump Symbol

