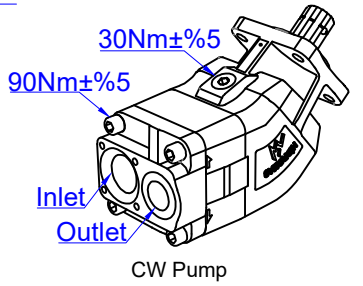
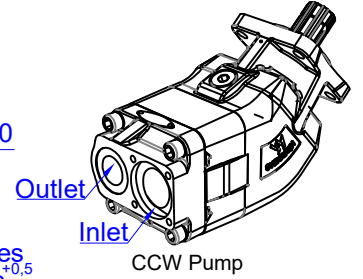
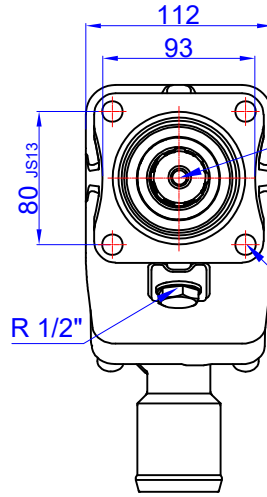
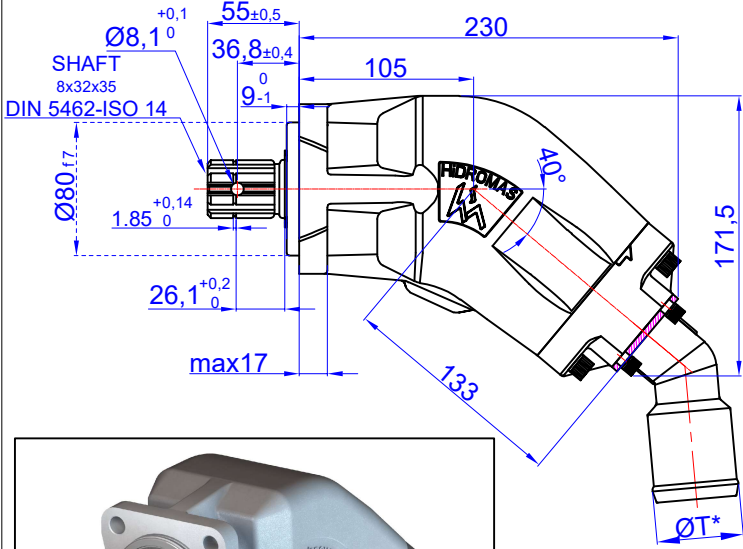


55L BENT AXIS PISTON PUMPS
7 ELEMANLI EKSENEL POMPA 55L SAĞ / SOL

Product Code / Ürün Kodu : PEX752055131
Ref. No: TP-0002 PEX752055132

CW
CCW



Inlet	Outlet
$\varnothing T^*$	3/4" BSPIT

$\varnothing T^*$: Emiş ve basınç rakoru ayrı sipariş verilmelidir.
Suction and pres. adapter must be ordered separately.

TEKNİK BİLGİLER / TECHNICAL DATA

Specifications

Displacement	55	cm ³ /rev
Max. Peak Pressure (P1)	450	bar
Max. Intermittent Pressure (P2)	430	bar
Max. Continuous Pressure (P3)	400	bar
Max. Speed at Intermittent Press.	2400	min ⁻¹
Min. Speed at Intermittent Press.	300	min ⁻¹
Max. Speed at Continuous Press.	2000	min ⁻¹
Oil Temperature Range	-40 ~ 80	°C
Inlet Pressure Range (suction side)	0,85 ~ 2	bar
Recommended Oil Viscosity Range	12 ~ 100	mm ² /s (cSt)
Max. Starting Viscosity	750	mm ² /s (cSt)
Filtration :		
Working Pressure < 200 bar	25	μ m
Working Pressure > 200 bar	10	μ m
Connection :		
Min. Suction Hose Bore Diameter (\varnothing T)	2	inch
Weight	10,5	kg
Rust prevent oil applied shaft area	protect 12 moths	

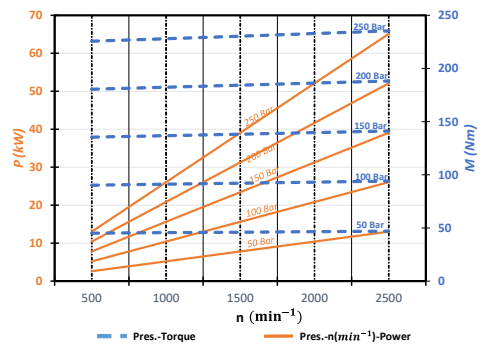
Power and Torque					
Pressure (Bar)	50	100	200	300	400
Torque (Nm)	49	97	195	292	389

Power (kW)					
rpm / Bar	50	100	200	300	400
500	3	5	10	16	21
1000	5	10	21	31	42
1500	8	16	31	47	63
2000	10	21	42	63	83
2500	13	26	52	78	104

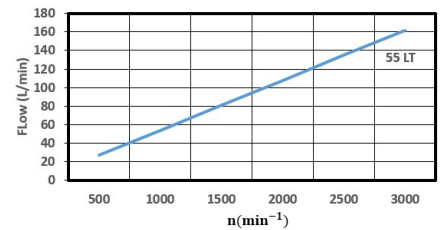
rpm (rev/min)	Flow (L/min)
500	27
1000	54
1500	81
2000	108
2500	135

DİYAGRAMLAR / DIAGRAMS

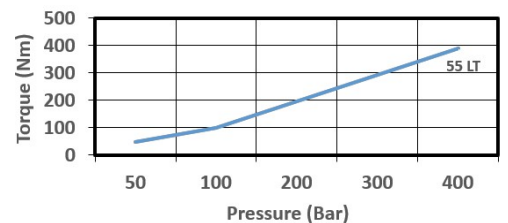
Power-Pressure Graphic



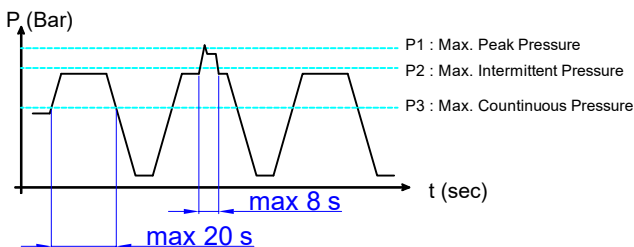
Flow-rpm Graphic



Torque-Pressure Graphic



Pressure Definition



Hydraulic Pump Symbol

