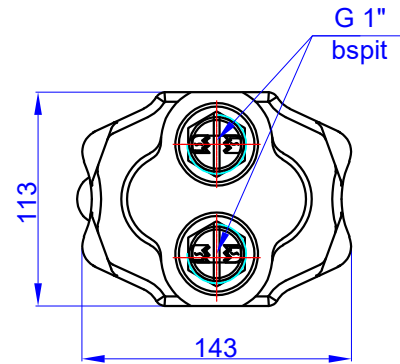
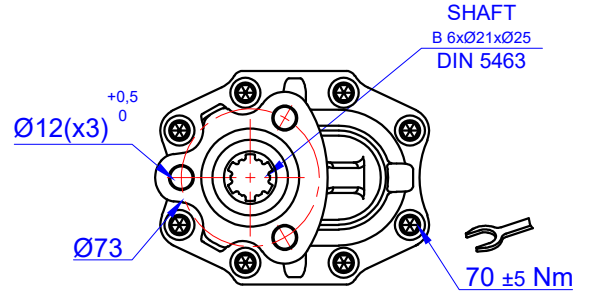
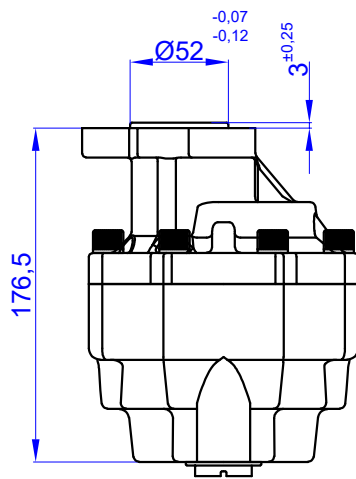
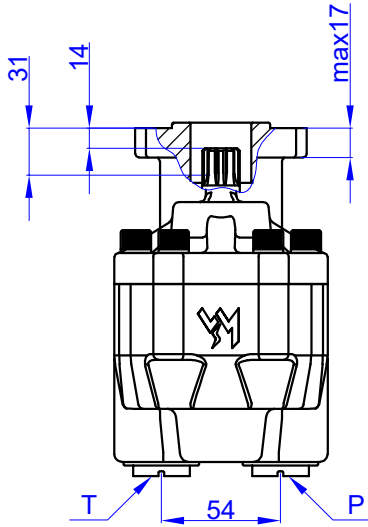


65 cc BI-ROTATIONAL GEAR PUMP-UNI  
DP 30-65 T1 ÇİFT DÖNÜŞLÜ (ARKA G-Ç) DIŞLI POMPA

Product Code / Ürün Kodu : PDCD3006510013  
Ref. No : 0001



### TEKNİK BİLGİLER / TECHNICAL DATA

#### Specifications

Displacement	65	cm <sup>3</sup> /rev
Max. Peak Pressure (P3)	240	bar
Max. Intermittent Pressure (P2) (for tipping applications)	230	bar
Max. Continuous Pressure (P1)	210	bar
Max. Speed at Intermittent Press.	2000	min <sup>-1</sup>
Min. Speed at Intermittent Press.	300	min <sup>-1</sup>
Max. Speed at Continuous Press.	1700	min <sup>-1</sup>
Oil Temperature Range	-40 ~ 80	°C
Inlet Pressure Range (suction side)	0,7 ~ 3	bar
Recommended Oil Viscosity Range	12 ~ 100	mm <sup>2</sup> /s (cSt)
Max. Starting Viscosity	750	mm <sup>2</sup> /s (cSt)
<b>Filtration :</b>		
-Working Pressure < 200 bar	25	µm
-Working Pressure > 200 bar	10	µm
<b>Connection :</b>		
Min. Suction Hose Bore Diameter	--	inch
Weight	9.7	kg
Rust prevent oil applied shaft area	protect 12 moths	

#### Power and Torque

Pressure (Bar)	50	100	150	200	240
Torque (Nm)	57	115	172	230	276

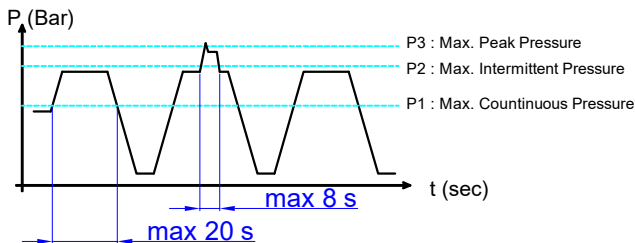
#### Power (kW)

rpm / Bar	50	100	150	200	240
500	3	6	9	12	15
1000	6	12	18	25	30
1500	9	18	28	37	44
1700	10	21	31	42	50
2000	12	25	37	49	59

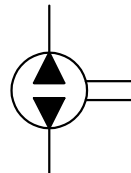
#### rpm (n/min) Flow (L/min)

rpm (n/min)	Flow (L/min)
500	32
1000	64
1500	96
1700	108
2000	127

#### Pressure Definition

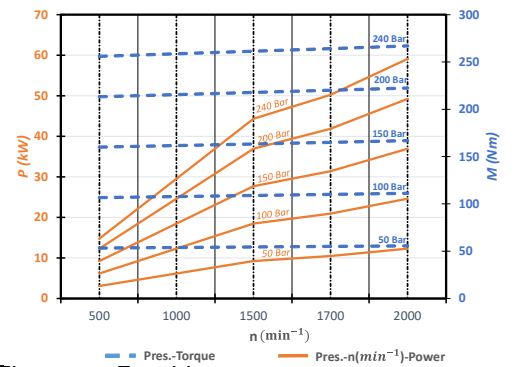


#### Hydraulic Pump Symbol

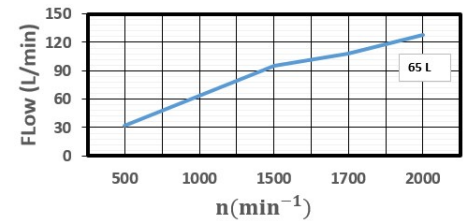


### DİYAGRAMLAR / DIAGRAMS

#### Power-Pressure Graphic



#### Flow-rpm Graphic



#### Torque-Pressure Graphic

