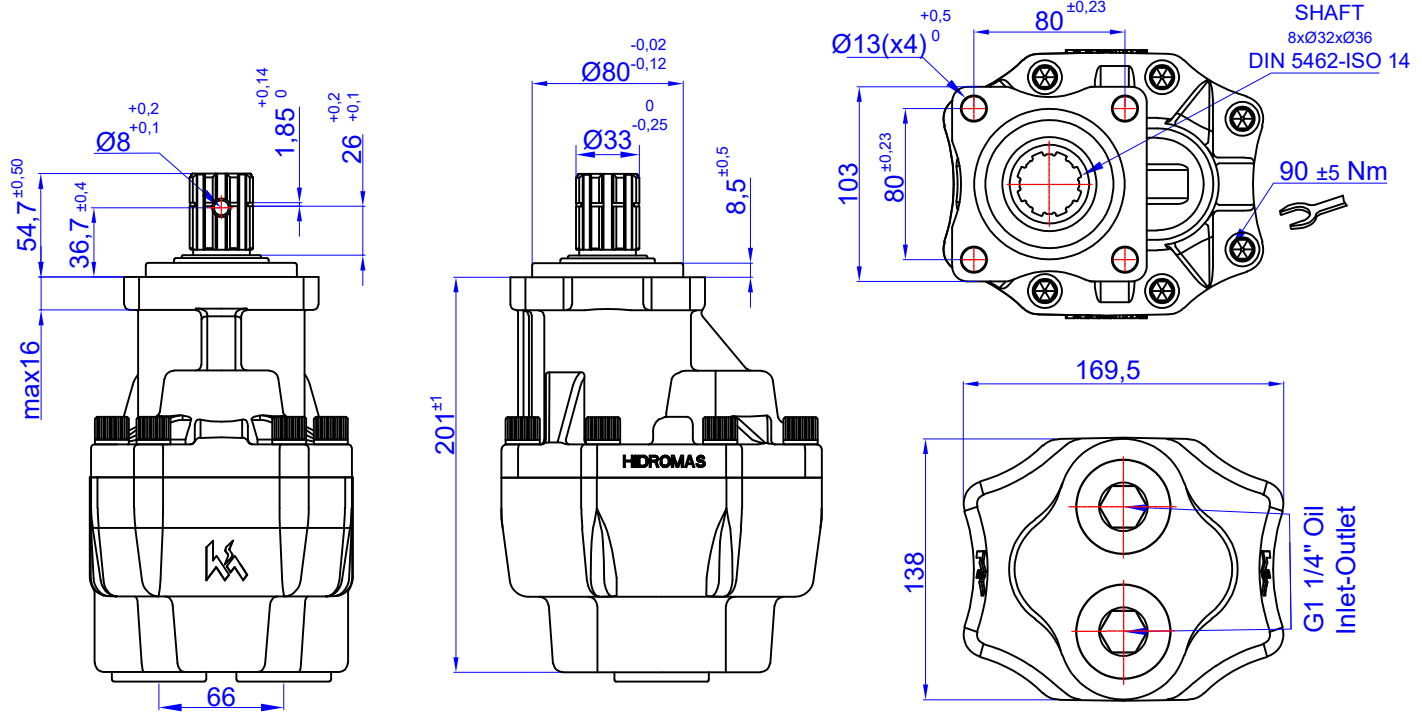


75 cc BI-ROTATIONAL GEAR PUMP-ISO
DPA 35-75 ÇİFT DÖNÜŞLÜ DİŞLİ POMPA

Product Code / Ürün Kodu : PDCD3507510133
Ref. No : 0001



TEKNİK BİLGİLER / TECHNICAL DATA

Specifications

Displacement	75	cm ³ /rev
Max. Peak Pressure (P3)	260	bar
Max. Intermittent Pressure (P2) (for tipping applications)	230	bar
Max. Continuous Pressure (P1)	210	bar
Max. Speed at Intermittent Press.	2000	min ⁻¹
Min. Speed at Intermittent Press.	300	min ⁻¹
Max. Speed at Continuous Press.	1500	min ⁻¹
Oil Temperature Range	-40 ~ 80	°C
Inlet Pressure Range (suction side)	0,7 ~ 3	bar
Recommended Oil Viscosity Range	12 ~ 100	mm ² /s (cSt)
Max. Starting Viscosity	750	mm ² /s (cSt)
Filtration :		
-Working Pressure < 200 bar	25	µm
-Working Pressure > 200 bar	10	µm
Connection :		
Min. Suction Hose Bore Diameter	--	inch
Weight	18	kg
Rust prevent oil applied shaft area	protect 12 moths	

Power and Torque

Pressure (Bar)	50	100	150	200	260
Torque (Nm)	66	133	199	265	345

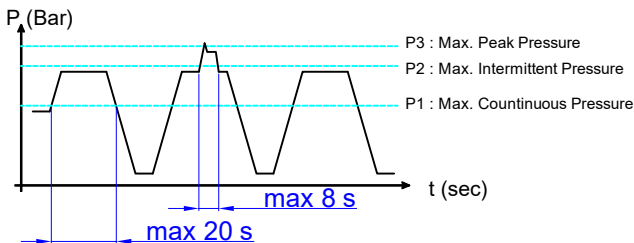
Power (kW)

rpm / Bar	50	100	150	200	260
500	4	7	11	14	18
1000	7	14	21	28	37
1500	11	21	32	43	55
1700	12	24	36	48	63
2000	14	28	43	57	74

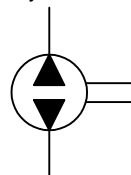
rpm (n/min) Flow (L/min)

rpm (n/min)	Flow (L/min)
500	37
1000	74
1500	110
1700	125
2000	147

Pressure Definition

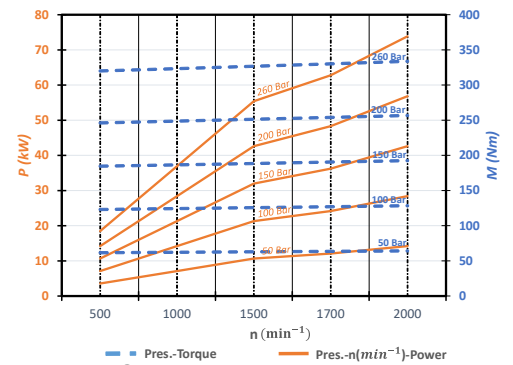


Hydraulic Pump Symbol

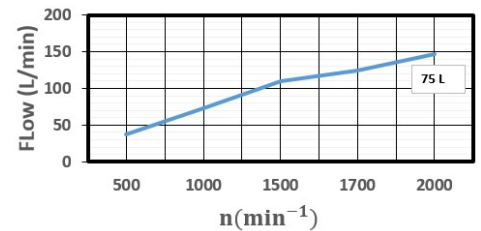


DİYAGRAMLAR / DIAGRAMS

Power-Pressure Graphic



Flow-rpm Graphic



Torque-Pressure Graphic

