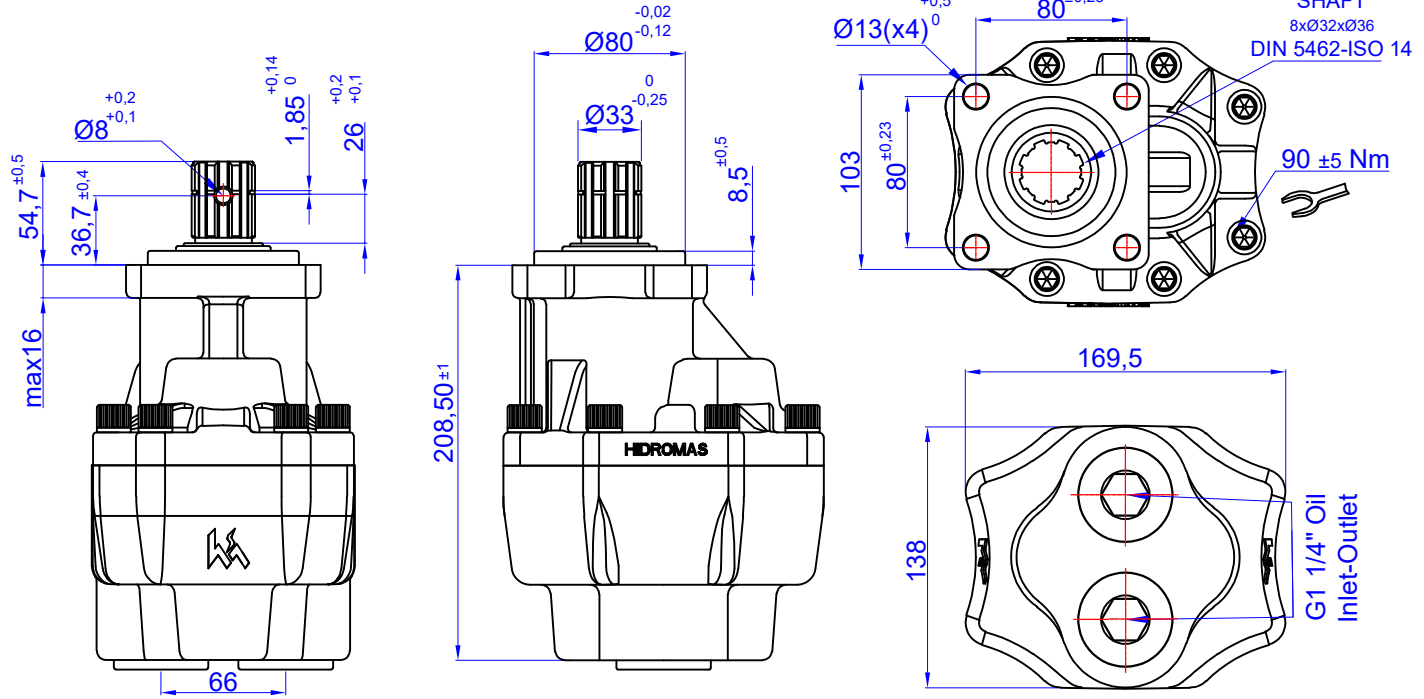


90 cc BI-ROTATIONAL GEAR PUMP-ISO
DPA 35-90 ÇİFT DÖNÜŞLÜ DIŞLI POMPA

Product Code / Ürün Kodu : PDCD3509010133
Ref. No : 0002



TEKNİK BİLGİLER / TECHNICAL DATA

Specifications

Displacement	90	cm ³ /rev
Max. Peak Pressure (P3)	265	bar
Max. Intermittent Pressure (P2) (for tipping applications)	250	bar
Max. Continuous Pressure (P1)	230	bar
Max. Speed at Intermittent Press.	2000	min ⁻¹
Min. Speed at Intermittent Press.	300	min ⁻¹
Max. Speed at Continuous Press.	1500	min ⁻¹
Oil Temperature Range	-40 ~ 80	°C
Inlet Pressure Range (suction side)	0,7 ~ 3	bar
Recommended Oil Viscosity Range	12 ~ 100	mm ² /s (cSt)
Max. Starting Viscosity	750	mm ² /s (cSt)
Filtration :		
-Working Pressure < 200 bar	25	µm
-Working Pressure > 200 bar	10	µm
Connection :		
Min. Suction Hose Bore Diameter	1 3/4	inch
Weight	17.5	kg
Rust prevent oil applied shaft area	protect 12 months	

Power and Torque

Pressure (Bar)	50	100	150	200	265
Torque (Nm)	80	159	239	318	422

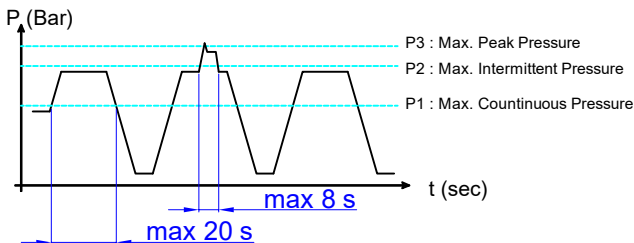
Power (kW)

rpm / Bar	50	100	150	200	265
500	4	9	13	17	23
1000	9	17	26	34	45
1500	13	26	38	51	68
1700	14	29	43	58	77
2000	17	34	51	68	90

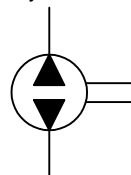
rpm (n/min) Flow (L/min)

rpm (n/min)	Flow (L/min)
500	44
1000	88
1500	132
1700	150
2000	176

Pressure Definition

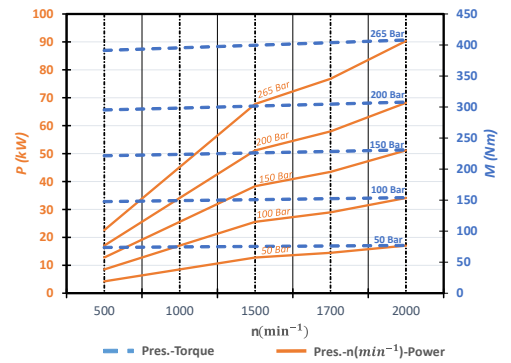


Hydraulic Pump Symbol

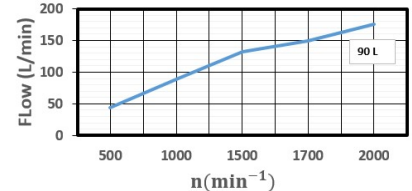


DİYAGRAMLAR / DIAGRAMS

Power-Pressure Graphic



Flow-rpm Graphic



Torque-Pressure Graphic

