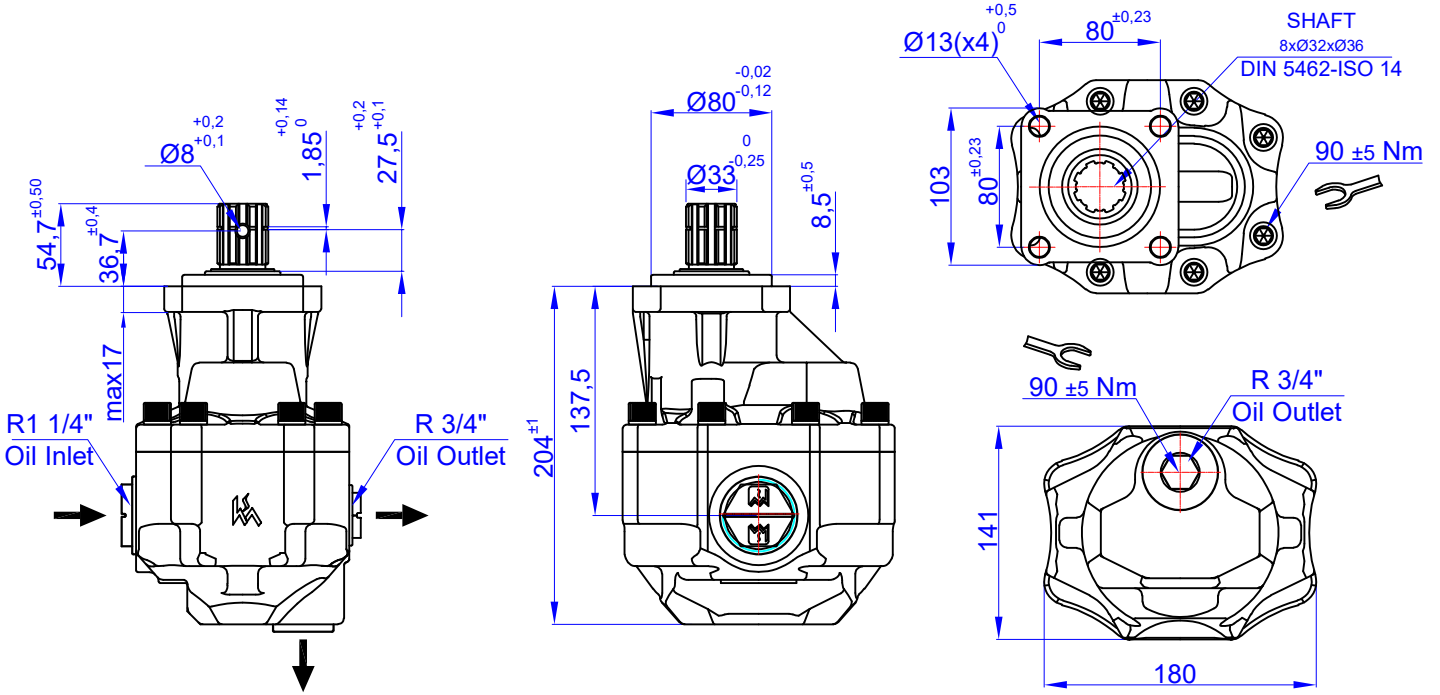


73 cc GEAR PUMP-ISO  
DPA 40-73 DİŞLİ POMPA SAĞ / SOL

Product Code / Ürün Kodu : PDTD400730131  
Ref. No:0003 PDTD400730132

CW  
CCW



### TEKNİK BİLGİLER / TECHNICAL DATA

#### Specifications

Displacement	73	cm <sup>3</sup> /rev
Max. Peak Pressure (P3)	275	bar
Max. Intermittent Pressure (P2) (for tipping applications)	260	bar
Max. Continuous Pressure (P1)	240	bar
Max. Speed at Intermittent Press.	2200	min <sup>-1</sup>
Min. Speed at Intermittent Press.	300	min <sup>-1</sup>
Max. Speed at Continuous Press.	1700	min <sup>-1</sup>
Oil Temperature Range	-40 ~ 80	°C
Inlet Pressure Range (suction side)	0,7 ~ 3	bar
Recommended Oil Viscosity Range	12 ~ 100	mm <sup>2</sup> /s (cSt)
Max. Starting Viscosity	750	mm <sup>2</sup> /s (cSt)
<b>Filtration :</b>		
-Working Pressure < 200 bar	25	µm
-Working Pressure > 200 bar	10	µm
<b>Connection :</b>		
Min. Suction Hose Bore Diameter	--	inch
Weight	19,5	kg
Rust prevent oil applied shaft area	protect 12 moths	

#### Power and Torque

Pressure (Bar)	50	100	150	200	275
Torque (Nm)	65	129	194	258	355

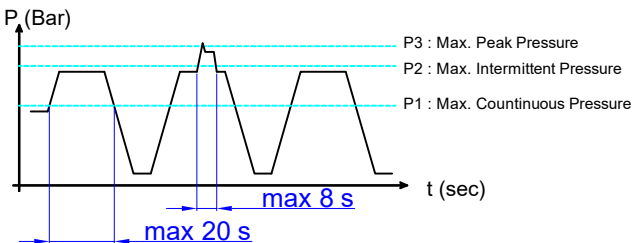
#### Power (kW)

rpm / Bar	50	100	150	200	275
500	3	7	10	14	19
1000	7	14	21	28	38
1400	10	19	29	39	53
1700	12	24	35	47	65
2200	15	30	46	61	84

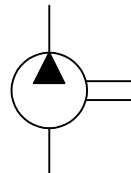
#### rpm (n/min) Flow (L/min)

rpm (n/min)	Flow (L/min)
500	36
1000	72
1400	100
1700	122
2200	157

#### Pressure Definition

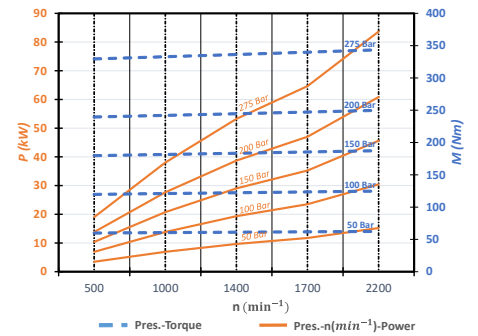


#### Hydraulic Pump Symbol

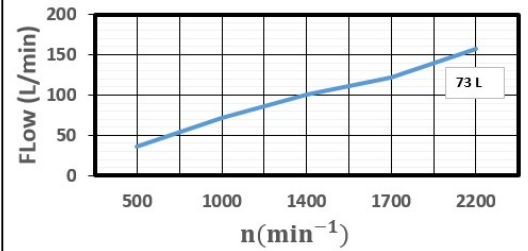


### DİYAGRAMLAR / DIAGRAMS

#### Power-Pressure Graphic



#### Flow-rpm Graphic



#### Torque-Pressure Graphic

