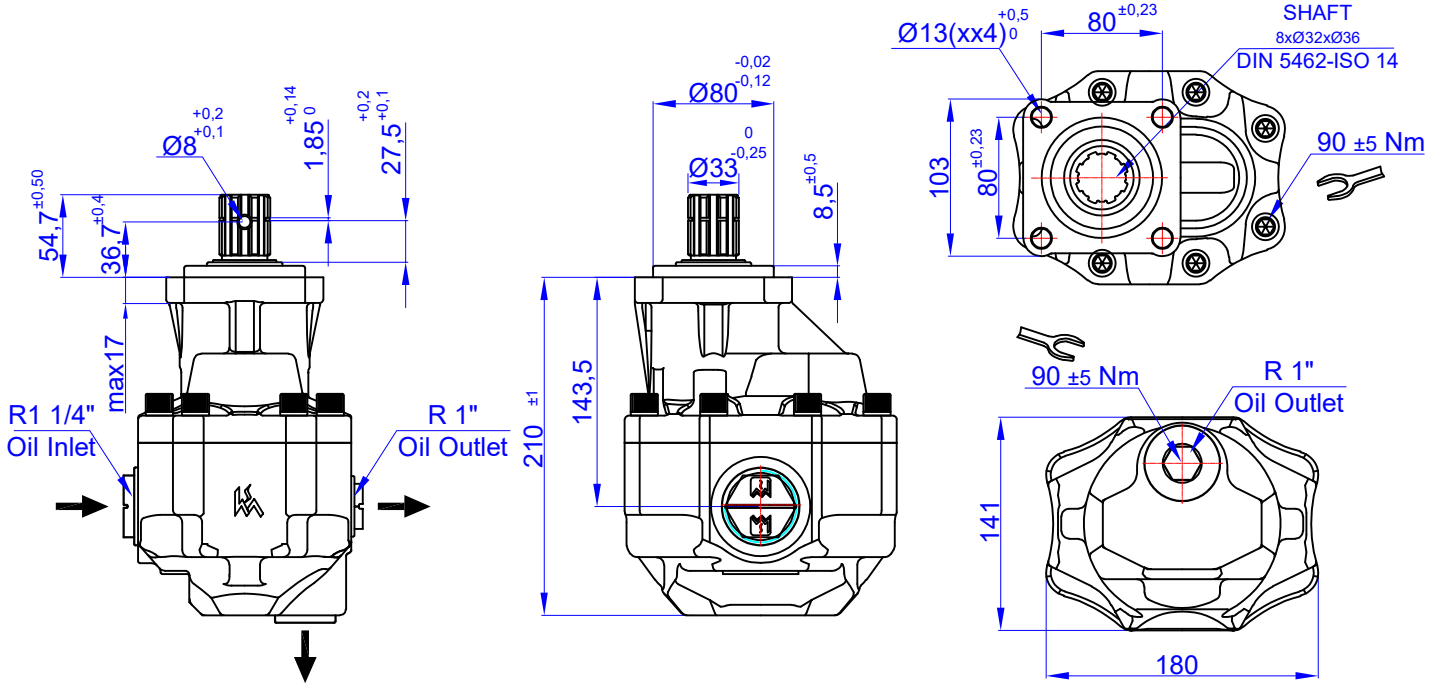


87 cc GEAR PUMP-ISO  
DPA 40-87 DİŞLİ POMPA SAĞ / SOL

Product Code / Ürün Kodu : PDTD400870131  
Ref. No:0003 PDTD400870132

CW  
CCW



### TEKNİK BİLGİLER / TECHNICAL DATA

#### Specifications

Displacement	87	cm <sup>3</sup> /rev
Max. Peak Pressure (P3)	250	bar
Max. Intermittent Pressure (P2) (for tipping applications)	240	bar
Max. Continuous Pressure (P1)	220	bar
Max. Speed at Intermittent Press.	2000	min <sup>-1</sup>
Min. Speed at Intermittent Press.	300	min <sup>-1</sup>
Max. Speed at Continuous Press.	1700	min <sup>-1</sup>
Oil Temperature Range	-40 ~ 80	°C
Inlet Pressure Range (suction side)	0,7 ~ 3	bar
Recommended Oil Viscosity Range	12 ~ 100	mm <sup>2</sup> /s (cSt)
Max. Starting Viscosity	750	mm <sup>2</sup> /s (cSt)
<b>Filtration :</b>		
-Working Pressure < 200 bar	25	µm
-Working Pressure > 200 bar	10	µm
<b>Connection :</b>		
Min. Suction Hose Bore Diameter	--	inch
Weight	20,5	kg
Rust prevent oil applied shaft area	protect 12 moths	

#### Power and Torque

Pressure (Bar)	50	100	150	200	250
Torque (Nm)	77	154	231	308	385

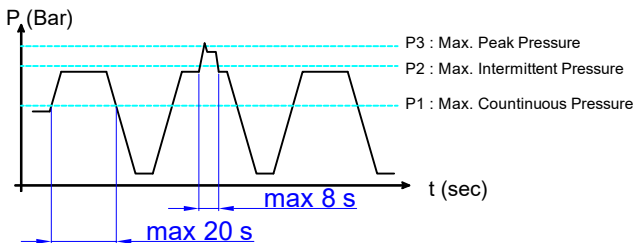
#### Power (kW)

rpm / Bar	50	100	150	200	250
500	4	8	12	16	21
1000	8	16	25	33	41
1500	12	25	37	49	62
1700	14	28	42	56	70
2000	16	33	49	66	82

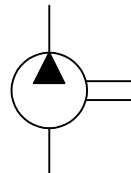
#### rpm (n/min) Flow (L/min)

rpm (n/min)	Flow (L/min)
500	43
1000	85
1500	128
1700	145
2000	171

#### Pressure Definition

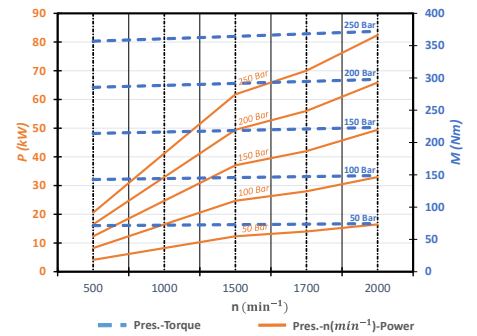


#### Hydraulic Pump Symbol

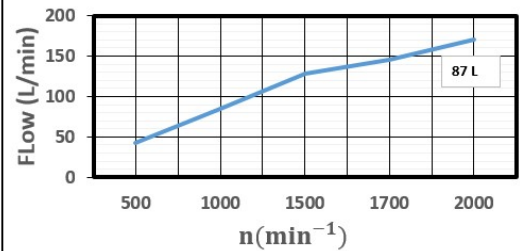


### DİYAGRAMLAR / DIAGRAMS

#### Power-Pressure Graphic



#### Flow-rpm Graphic



#### Torque-Pressure Graphic

