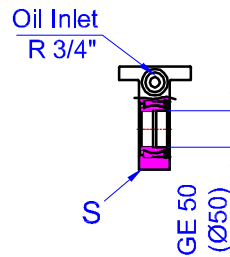
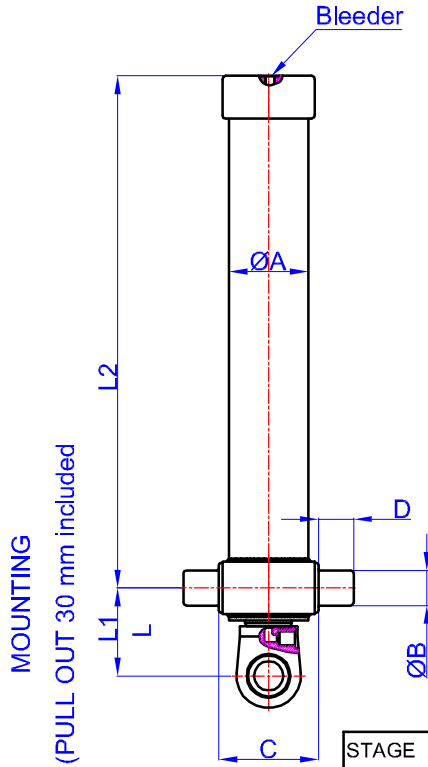


GHS 116 x 3 x 3075 A

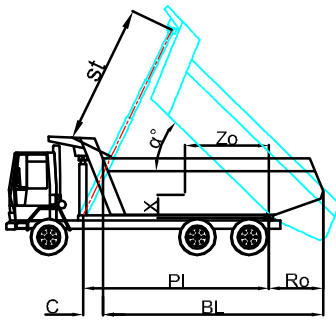
Drawing No :43116330751

Reference No :01-001



A	:	136	mm
B	:	60	mm
C	:	170	mm
D	:	60	mm
L	:	150	mm
*L1	:	180	mm
L2	:	1193	mm
S	:	42	mm

\* Inc 30 mm pull out :  
 tolerance +20 -0  
 Hard Chromed all stages  
 Working Pressure : 170 Bar  
 Max. Working Pressure : 190  
 Bar  
 All Cylinder Materials are St  
 52 Cold Drawn Tubes



STAGE	1	2	3	4	5	6	7	8	TOTAL
EFFECTIVE DIAMETER (mm)	Ø116	Ø98	Ø80						
STROKE	1025	1025	1025						3075
OIL DISPLACEMENT (L)	11,5	8,5	5,5						30
THRUST AT 170 BAR (TONS)	18	12	8						

BL (body length)	BL	3800	600	3700	600	3600	600
Ro (rear overhang)	Ro	200	400	200	400	200	400
α°	α°	46	49	47	50	49	52
Ycog (vert. pos. centre of gravity)	Ycog	400	24	22	25	22	26
PI (Pivot lengt)	PI	700	25	26	30	26	33
α° = st x 60 / PI	α°	1000	28	30	38	32	39
st	st	2913	2940	2898	2916	2940	2946
			2946		2970		2986

Weight : 100 Kg

Drawing No :43116330751-01-001