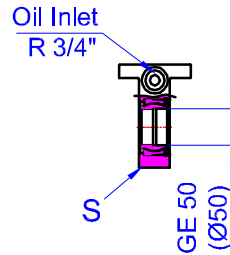
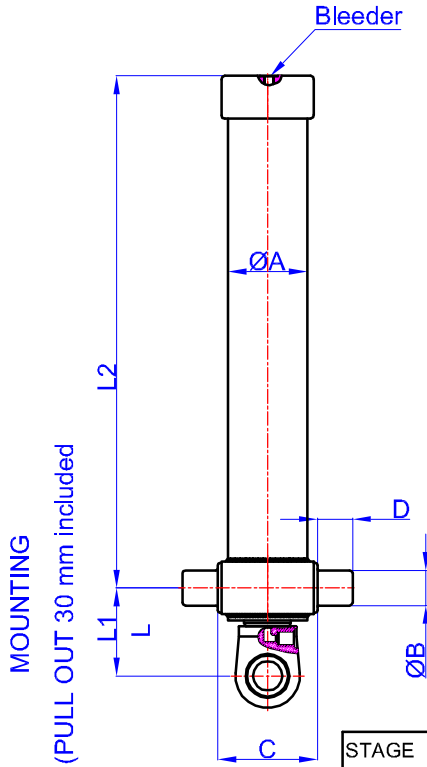


GHS 155 x 4 x 4100 A

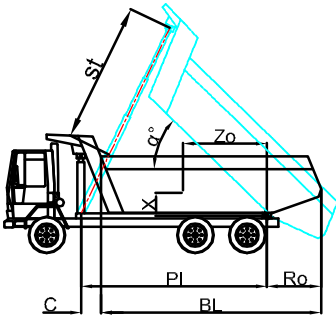
Drawing No :43155441001

Reference No :01-001



A	:	175	mm
B	:	60	mm
C	:	215	mm
D	:	60	mm
L	:	152,5	mm
*L1	:	182,5	mm
L2	:	1193	mm
S	:	42	mm

* Inc 30 mm pull out :
 tolerance +20 -0
 Hard Chromed all stages
 Working Pressure : 170 Bar
 Max. Working Pressure : 190
 Bar
 All Cylinder Materials are St
 52 Cold Drawn Tubes



STAGE	1	2	3	4	5	6	7	8	TOTAL
EFFECTIVE DIAMETER (mm)	Ø154,5	Ø135	Ø116	Ø98					
STROKE	1025	1025	1025	1025					4100
OIL DISPLACEMENT (L)	20,5	15	11,5	8					62
THRUST AT 170 BAR (TONS)	31	24	18	12					

BL (body length)
 Ro (rear overhang)
 Ycog (vert. pos.
 centre of gravity)
 PI(Pivot lengt)
 $\alpha^\circ = \frac{st \times 60}{PI}$

	5200			5000			4800		
BL	200	500	800	200	500	800	200	500	800
Ro	45	48	52	47	50	54	49	53	57
Ycog	36	41	50	37	44	55	39	47	61
600	40	48	62	42	52	68	45	58	73
900	46	58	72	49	62	78	53	66	81
1200	3900	3838	3910	3833	3958	3886	3920	3900	3920
st									

Weight : 170 Kg

Drawing No :43155441001-01-001